

NORTH AMERICAN HELIUM CONFERENCE

Technical Presentation

March 2023

BLUE STAR | HELIUM



BLUE STAR | HELIUM

THE LEADING HELIUM PURE PLAY

Strategic early-mover in the world's largest helium market

High grade helium resource in Las Animas, Colorado, U.S.

Low cost, high impact exploration and development drilling program

Voyager discovery development with experienced midstream partner

First helium sales into premium spot market from H2 2023

Visit bluestarhelium.com

ASX: **BNL** | OTCQB: **BSNLF**

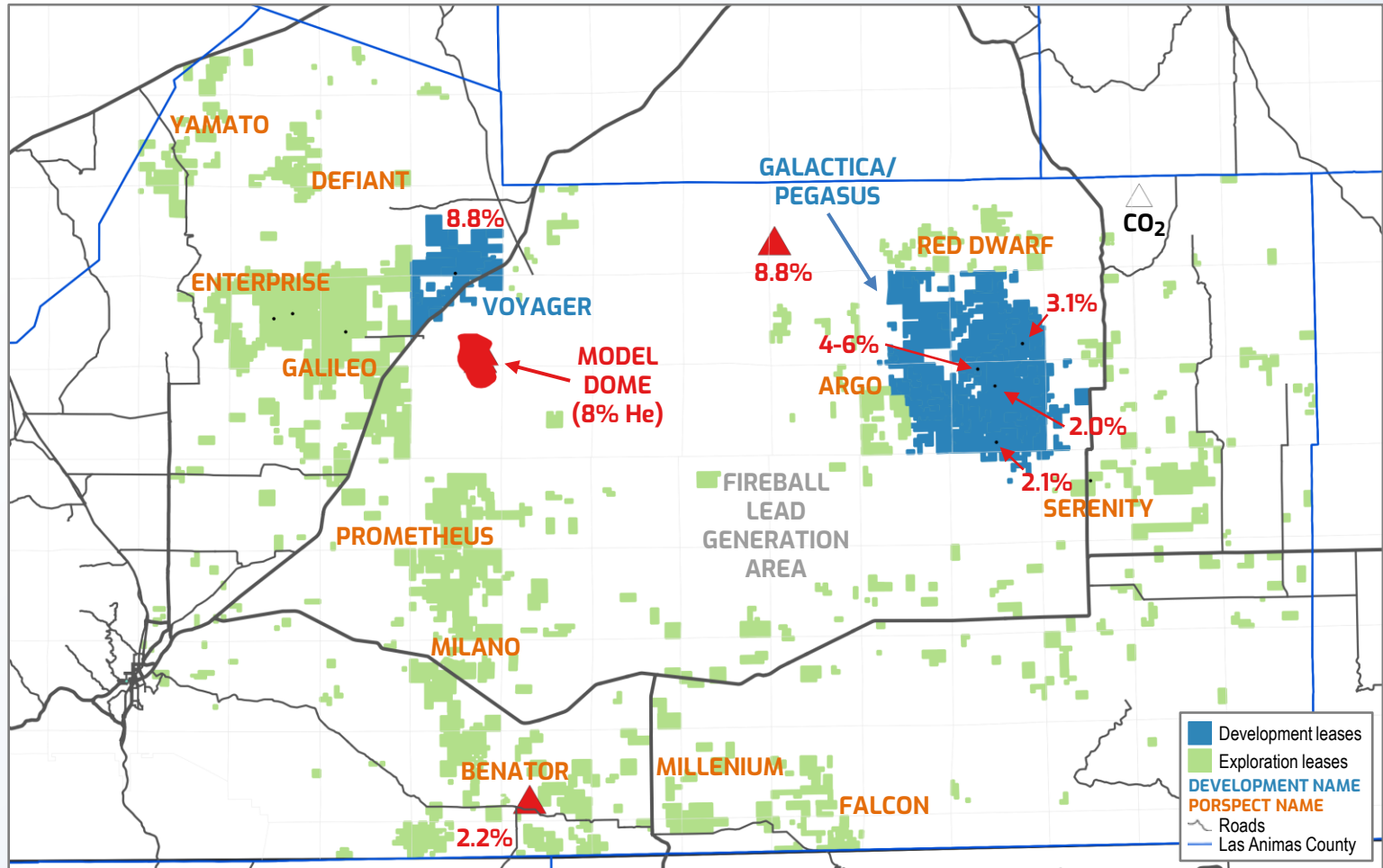
A space shuttle is shown launching from the left side of the frame, ascending into a dark, star-filled sky. A large, billowing cloud of white and grey smoke and fire surrounds the base of the shuttle. The shuttle itself is white with orange and black accents. The background is a deep blue space with numerous stars and a bright, glowing horizon line that separates the dark sky from a lighter, blue-tinted area below. The overall scene conveys a sense of upward movement and exploration.

THE PROVEN AND POTENTIAL PLAYS

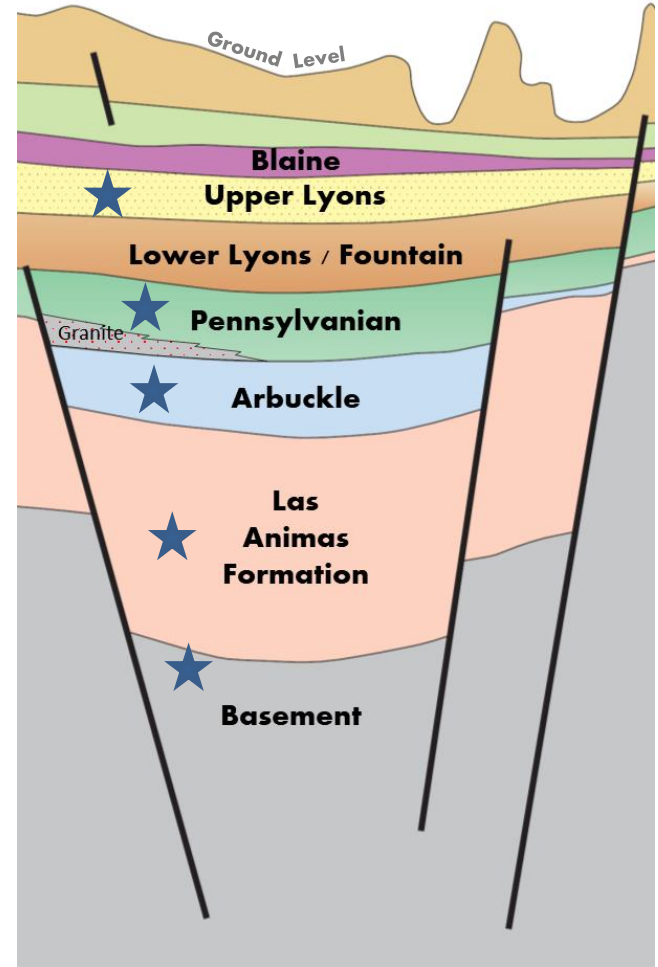
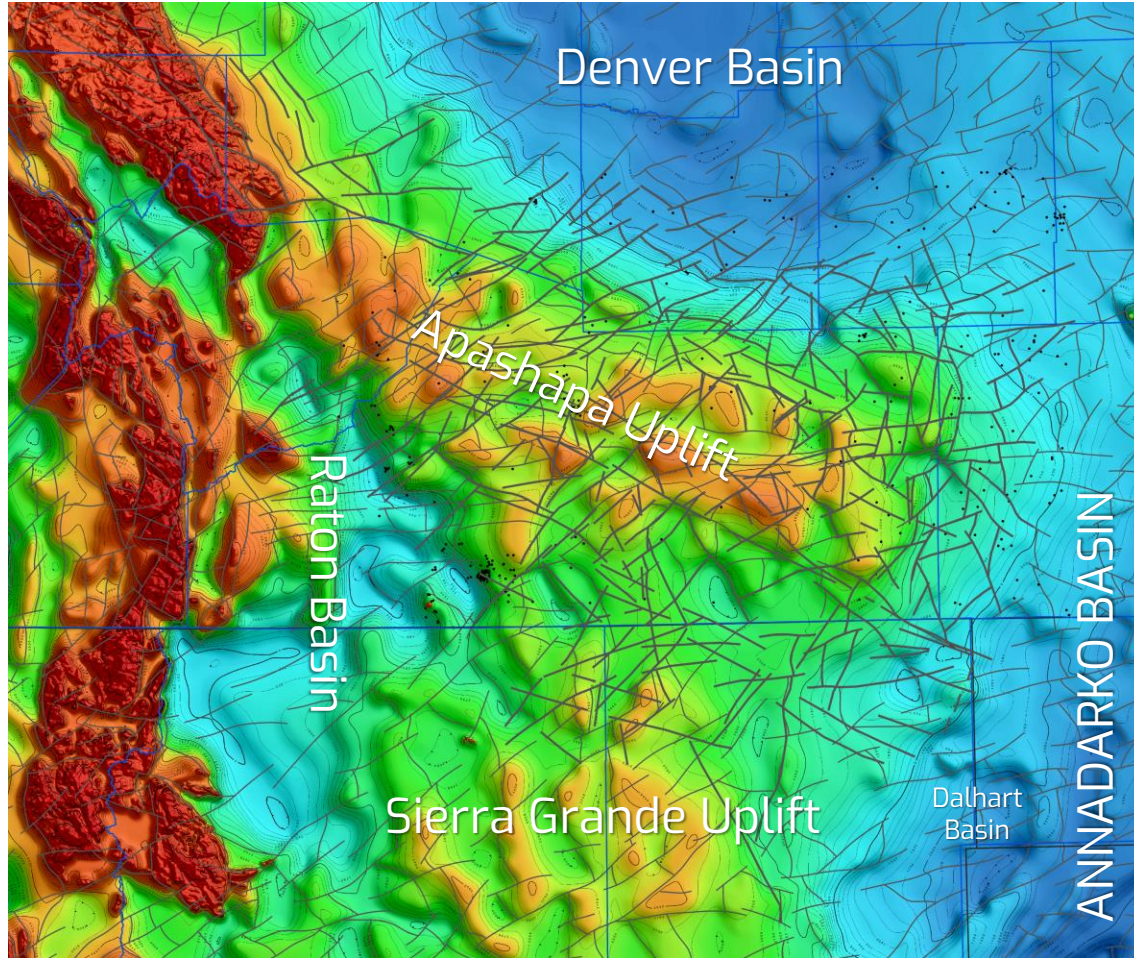
Las Animas County,
SE Colorado

Trent Spry

BLUE STAR's LAS ANIMAS LEASEHOLD

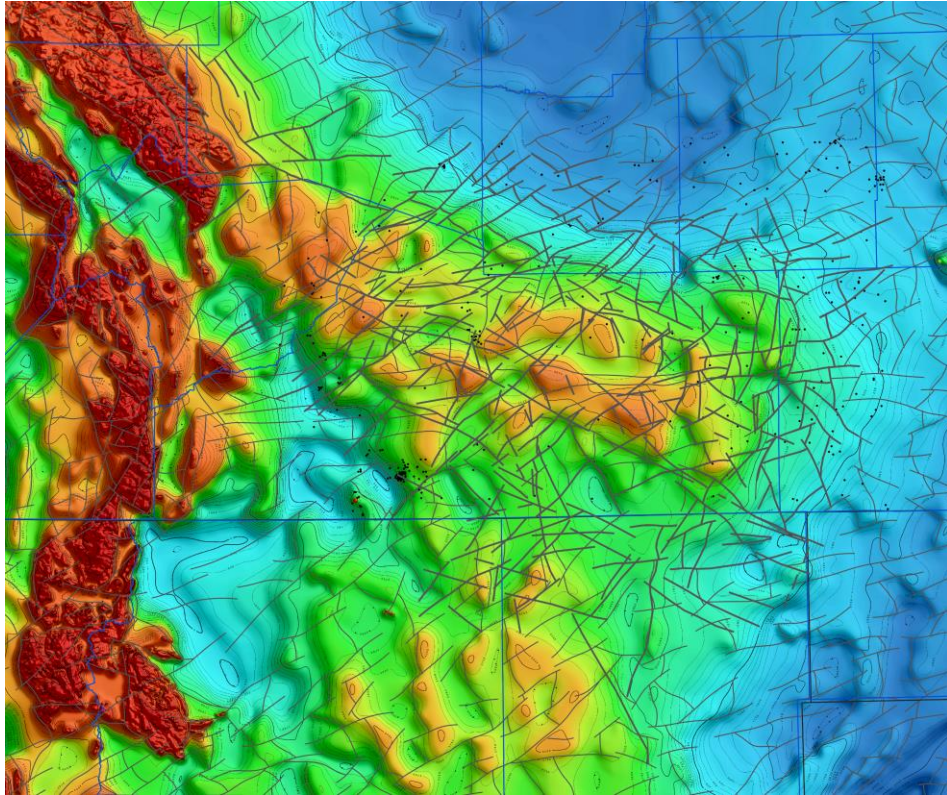


STRUCTURE & STRATIGRAPHY

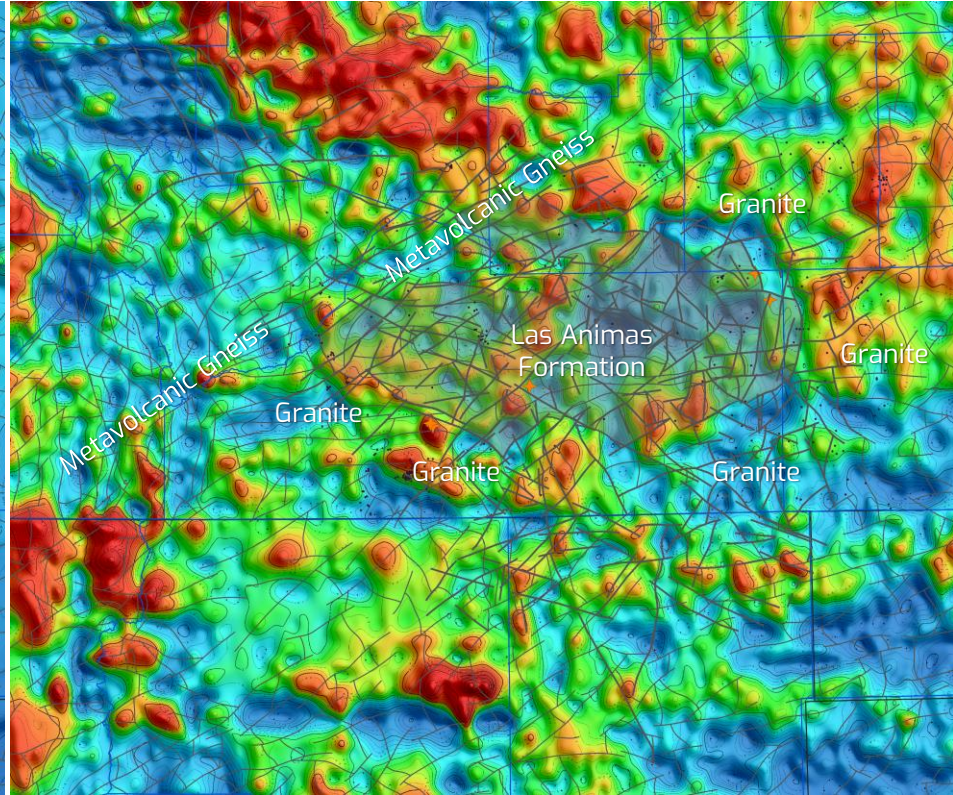


HELIUM SOURCE

Basement including Las Animas Formation provide source with significant generation capacity and volume



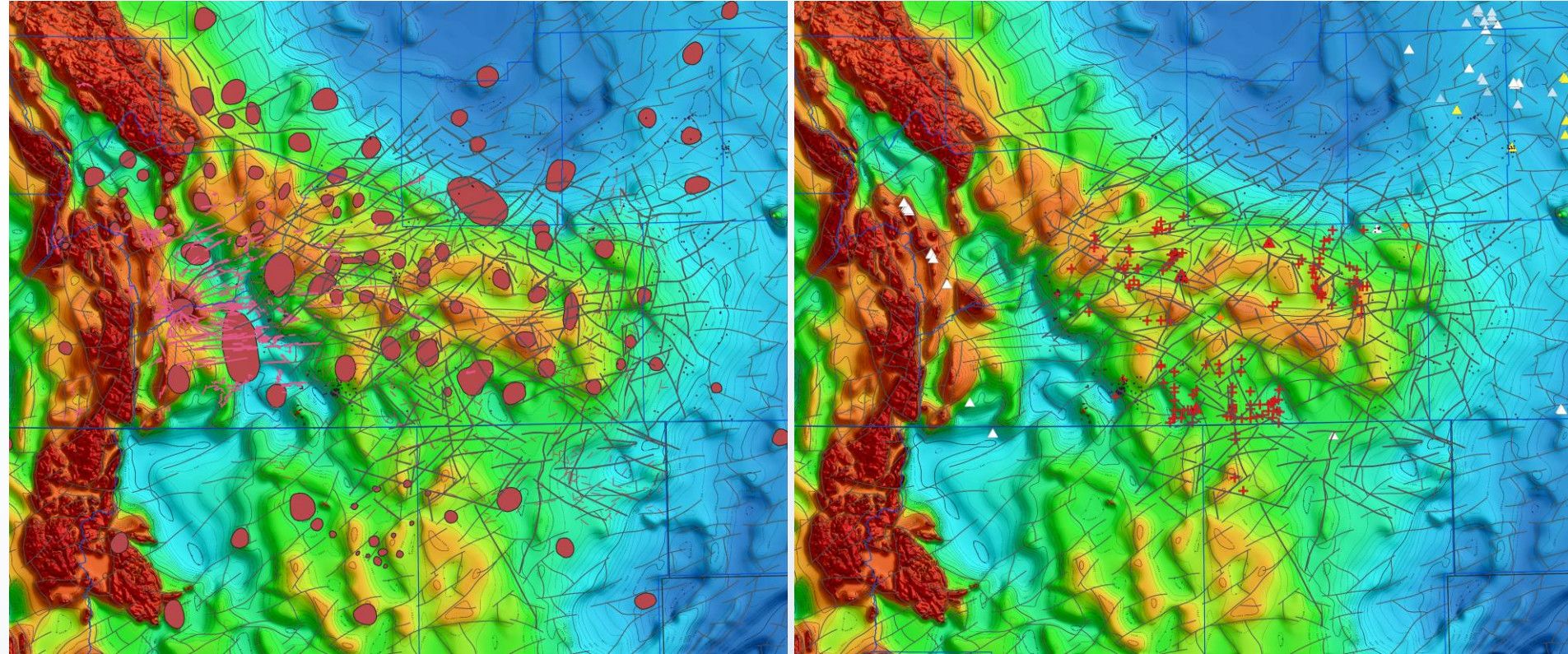
Basement Depth



Radiogenic/Basement Composition

HELIUM CHARGE

Recent thermal, structural & fracturing induce helium charge proven by helium wells & surface anomalies



Shallow Intrusives



Dyke



Fractures

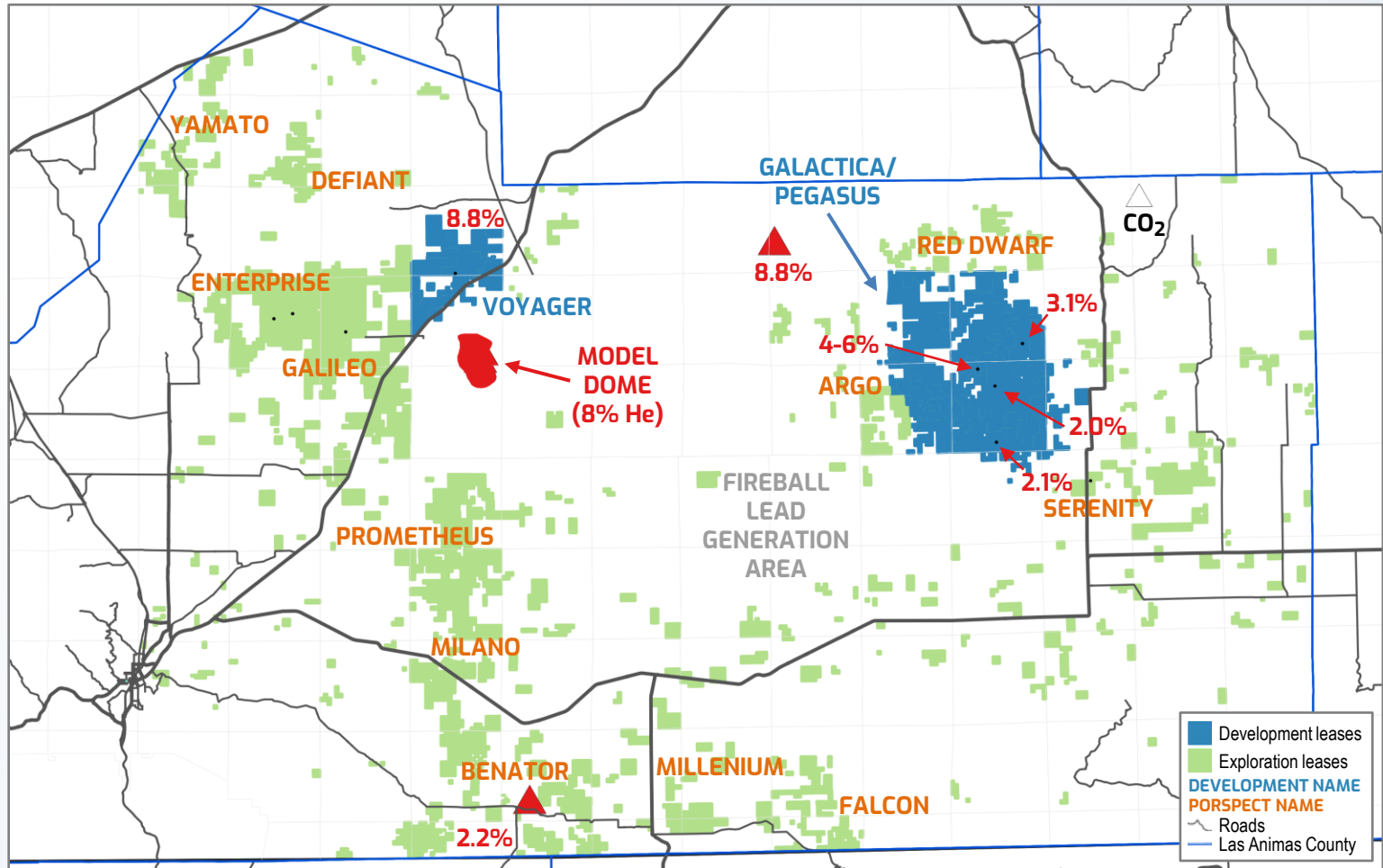


High He Well



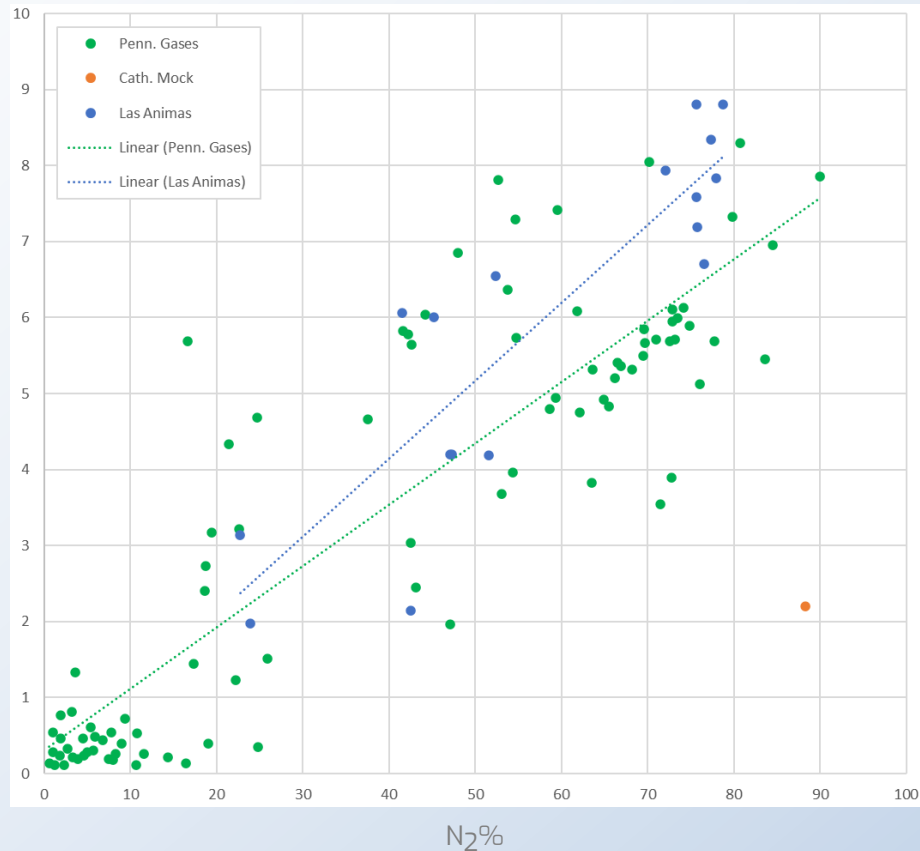
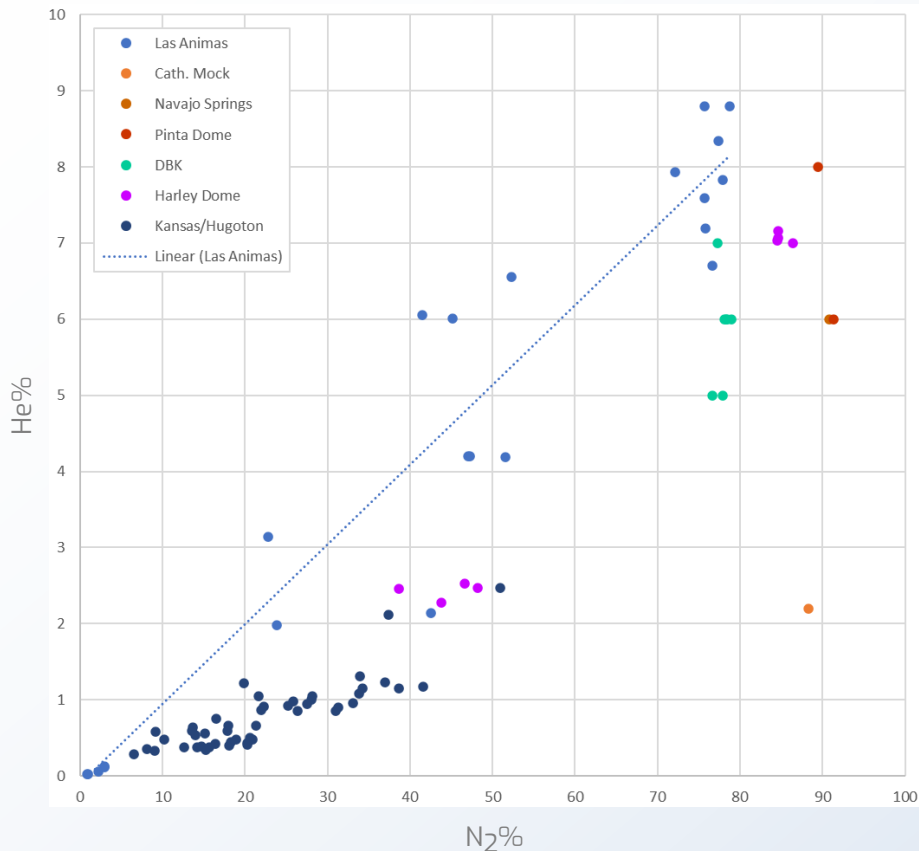
High He Soil Gas

GAS COMPOSITIONAL ANALYSIS

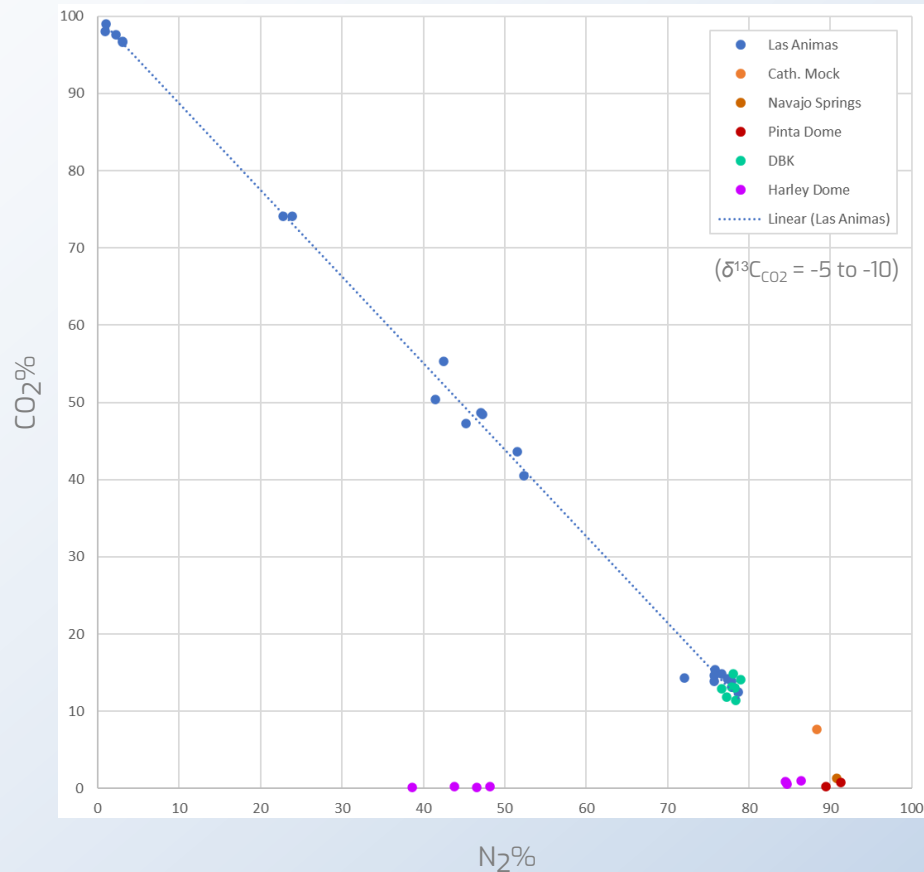
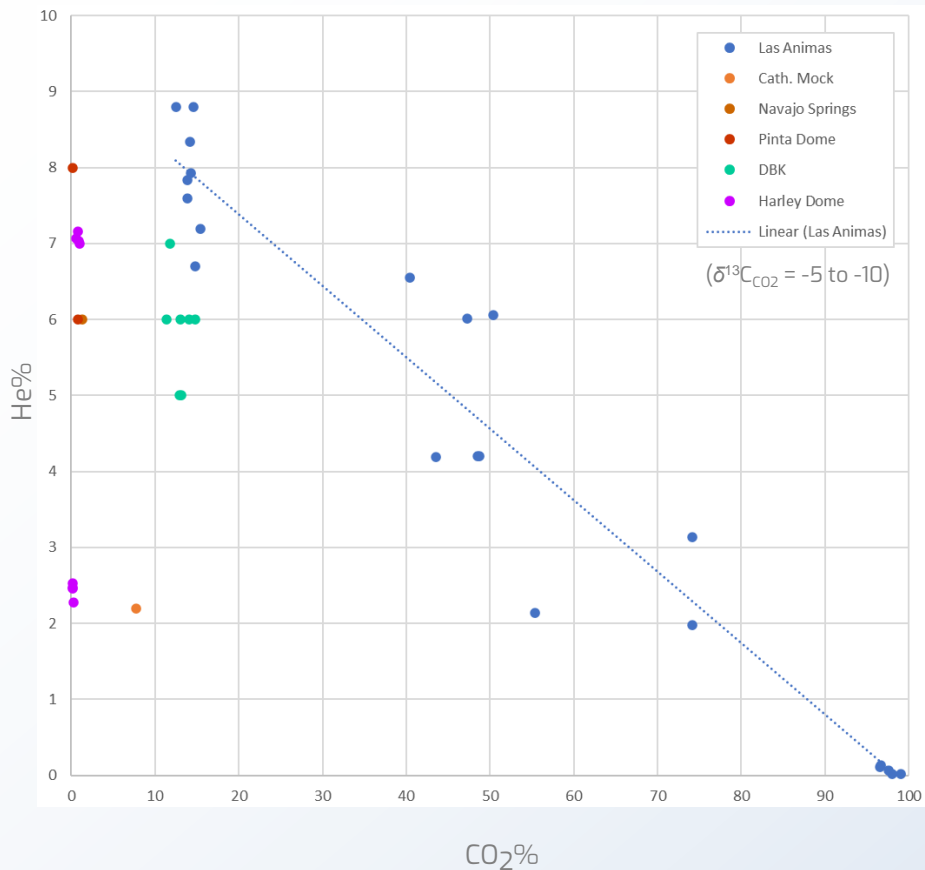


GAS COMPOSITIONAL ANALYSIS

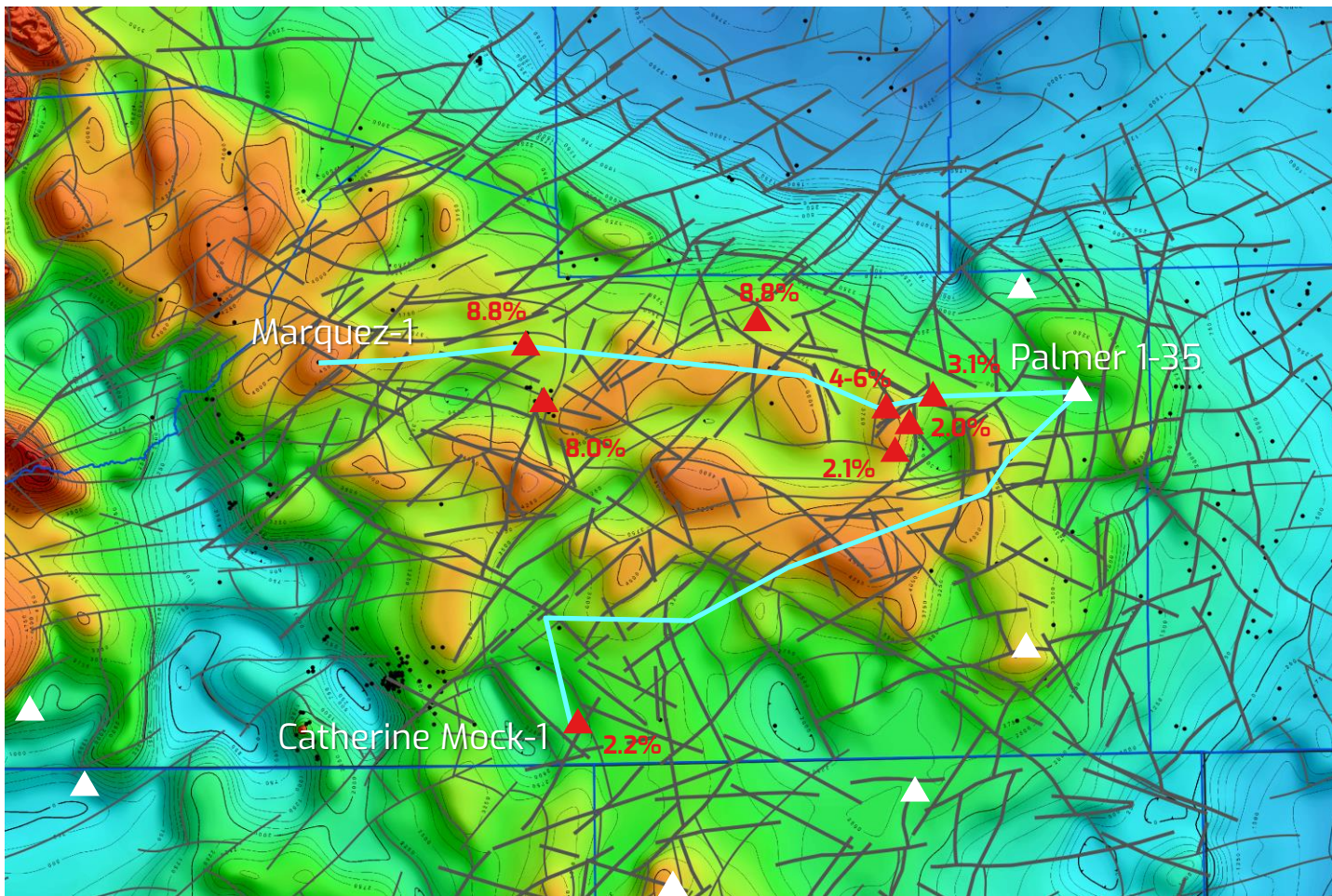
Strong positive correlation between helium & nitrogen suggesting a related charge mechanism



GAS COMPOSITIONAL ANALYSIS

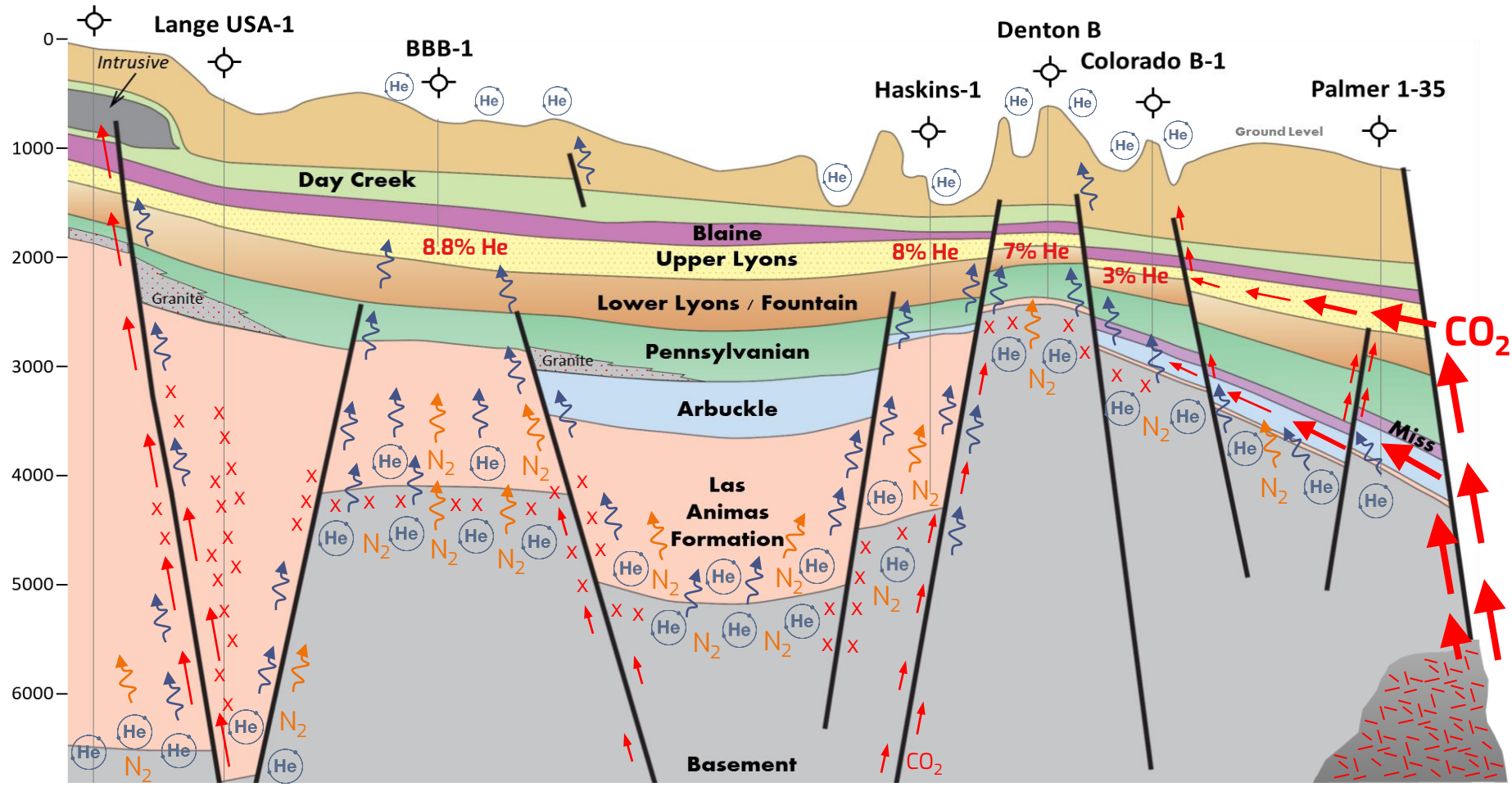


CROSS-SECTION BASEMAP & HELIUM, CO2 DISTRIBUTION

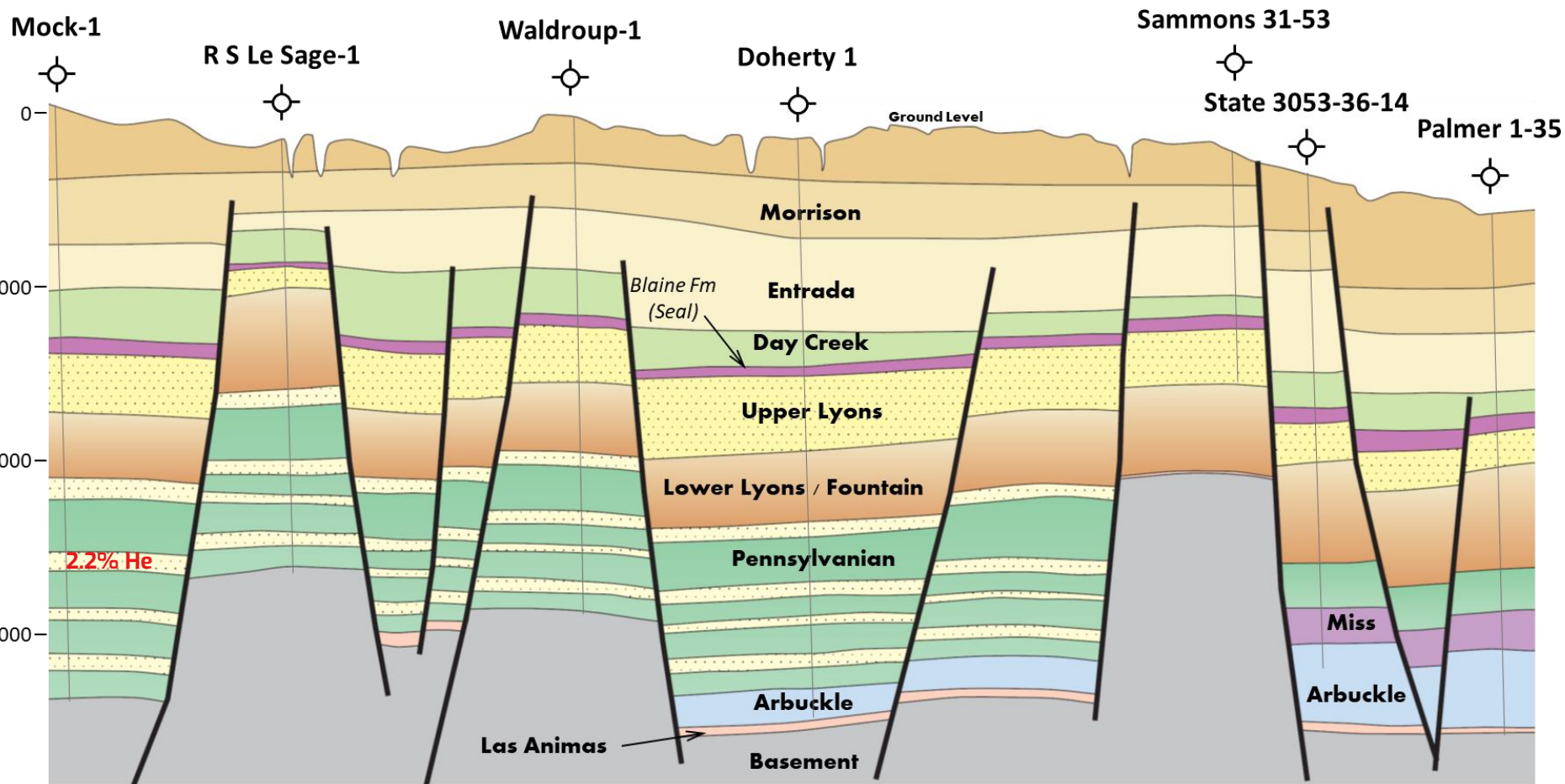


MARQUEZ to PALMER CROSS-SECTION

Marquez-1

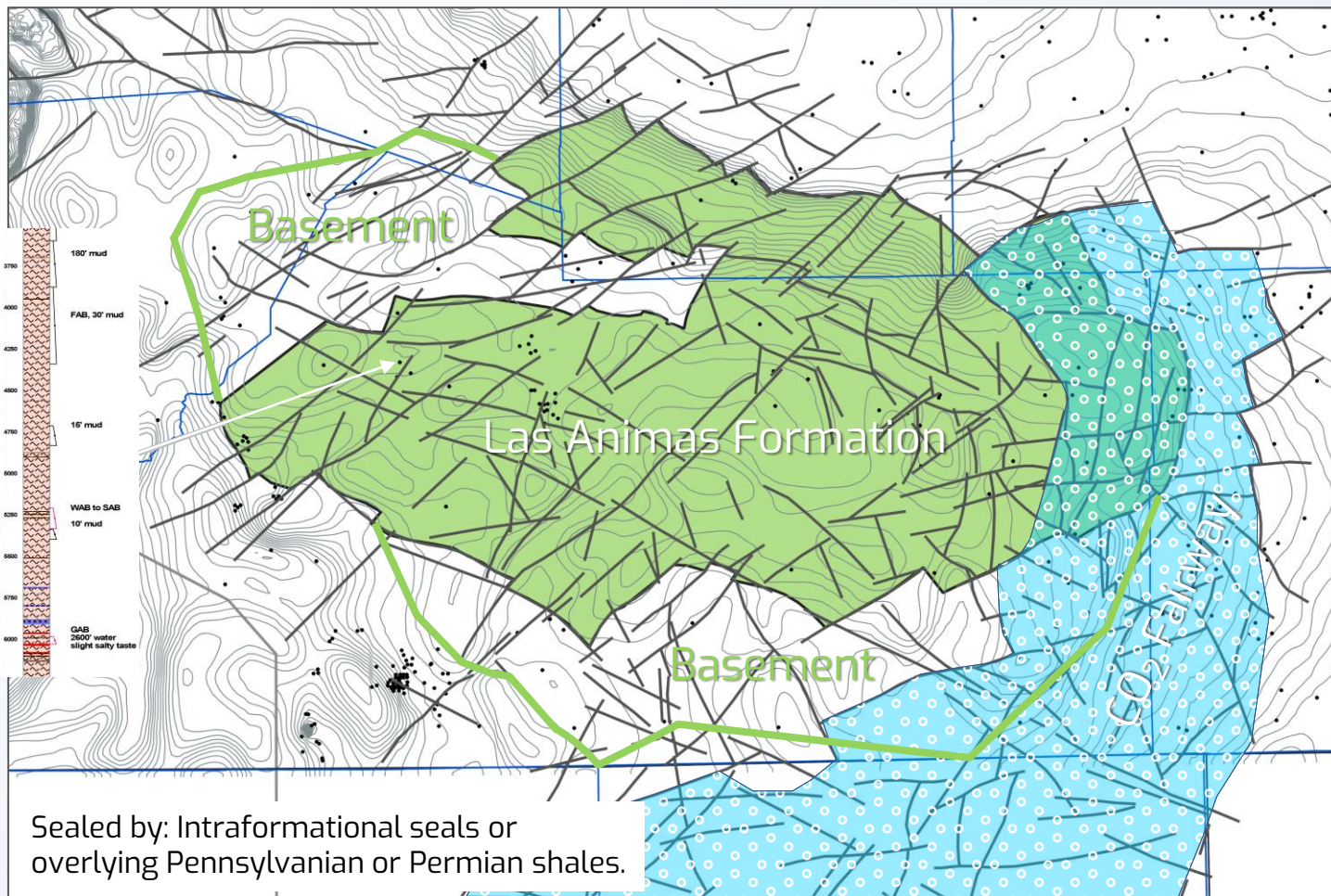
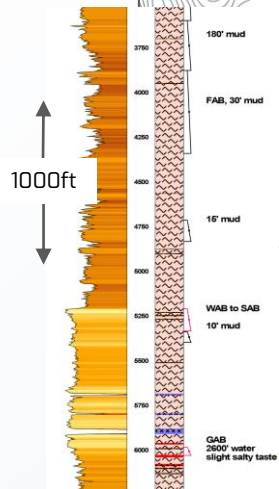


Cath. Mock to PALMER CROSS-SECTION



LAS ANIMAS FORMATION + FRACTURED BASEMENT / WASH

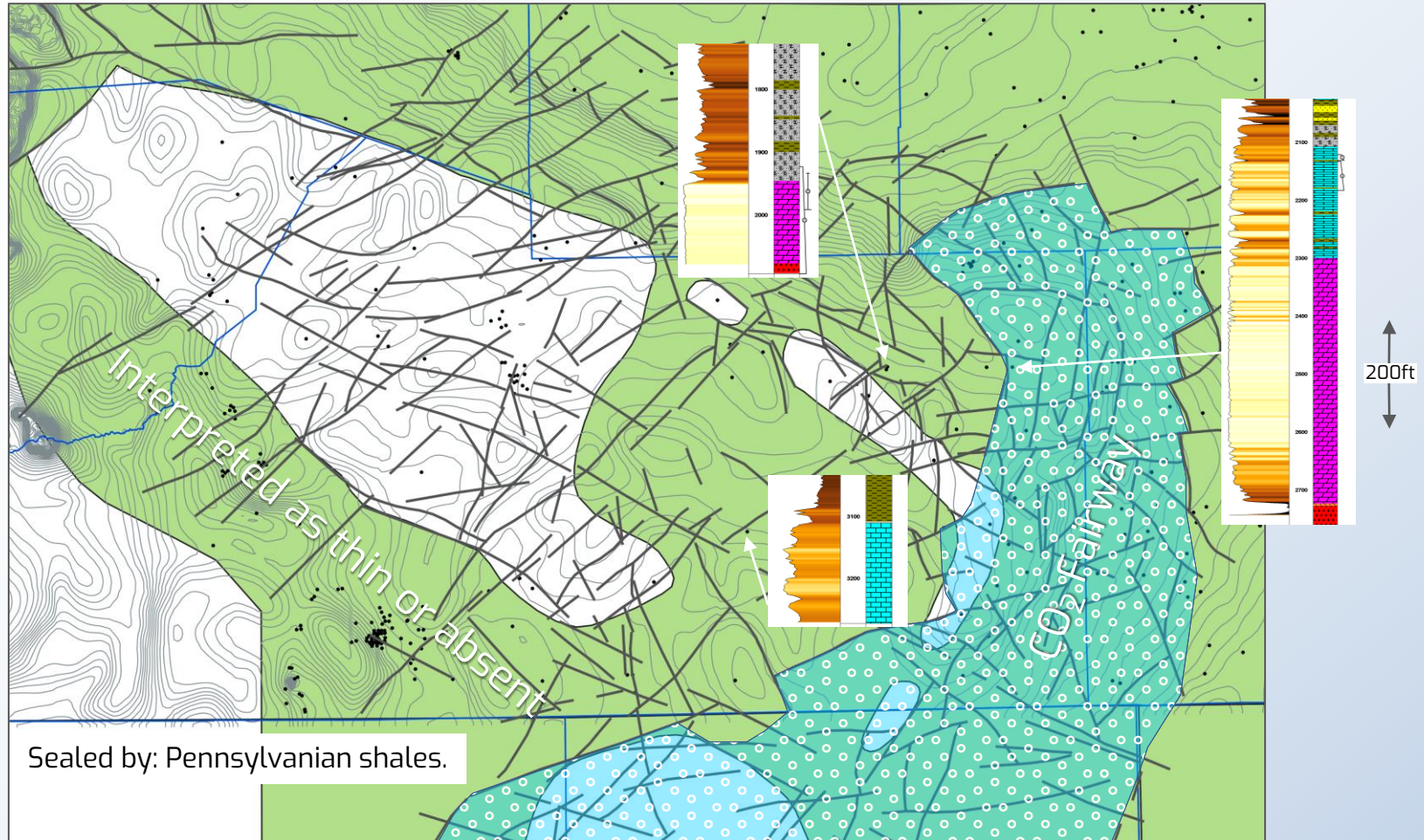
Potential



Sealed by: Intraformational seals or
overlying Pennsylvanian or Permian shales.

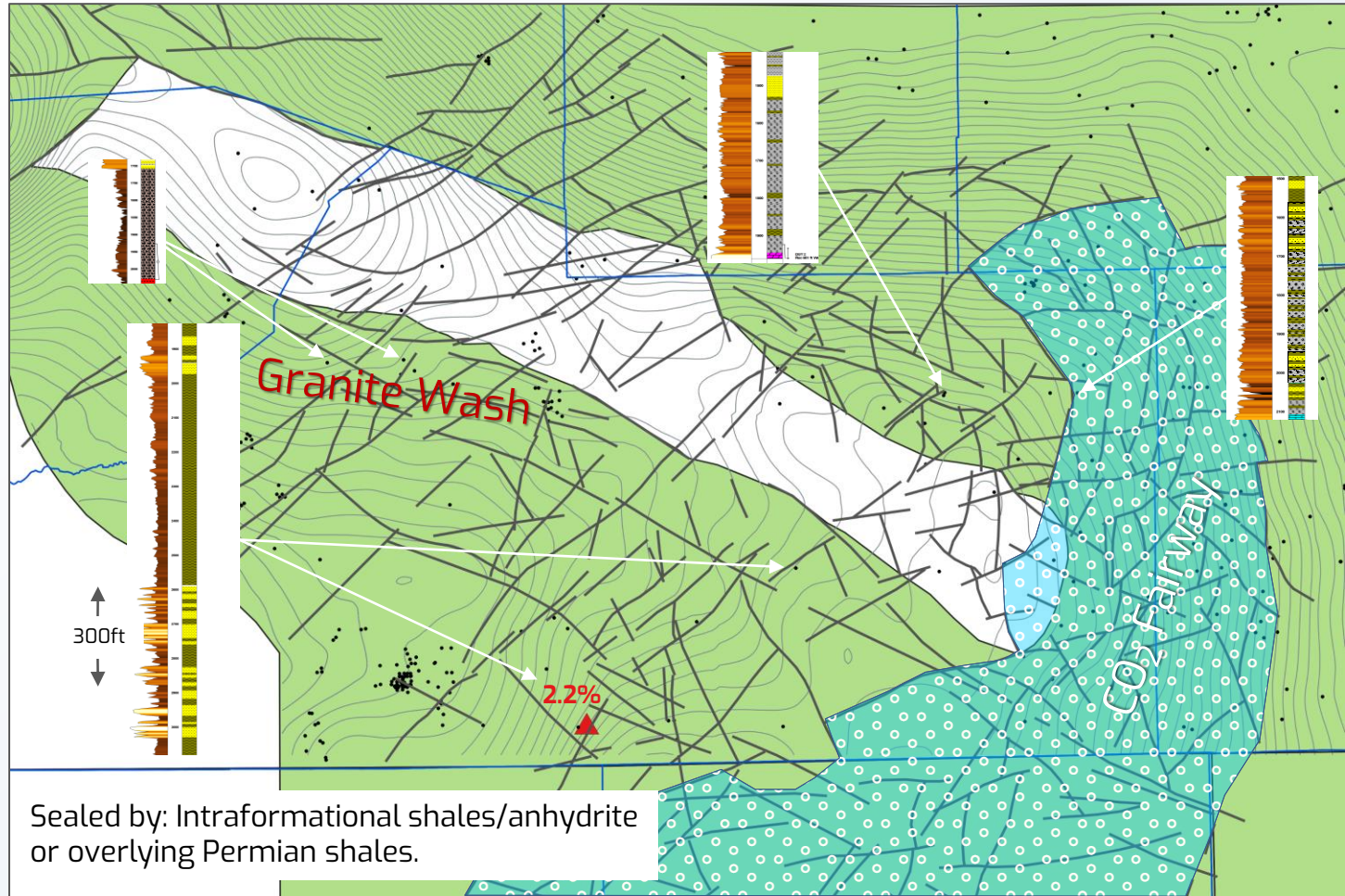
PRE-PENNSYLVANIAN CARBONATES (ARBUCKLE)

Potential

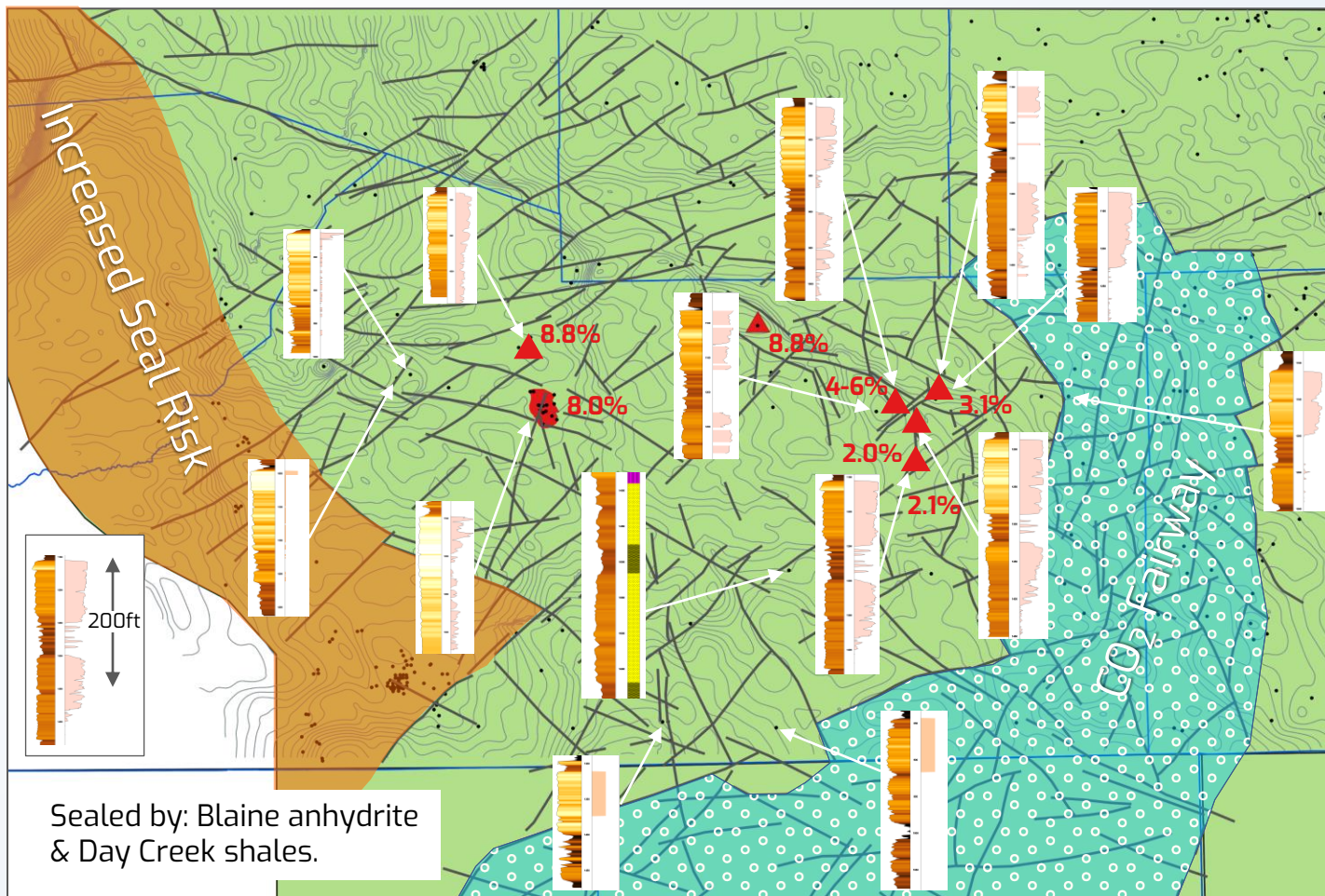


PENNSYLVANIAN

Potential

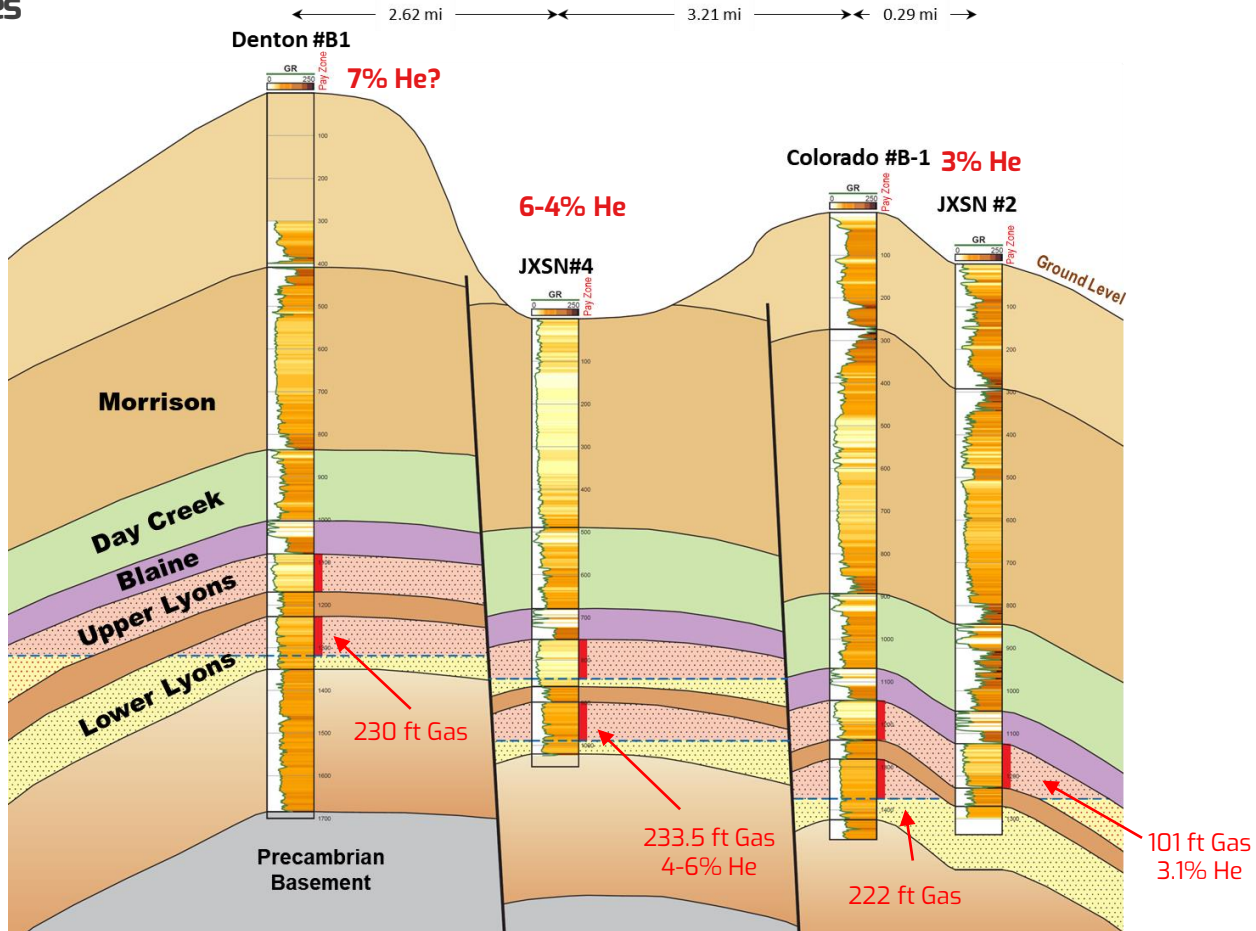


Proven

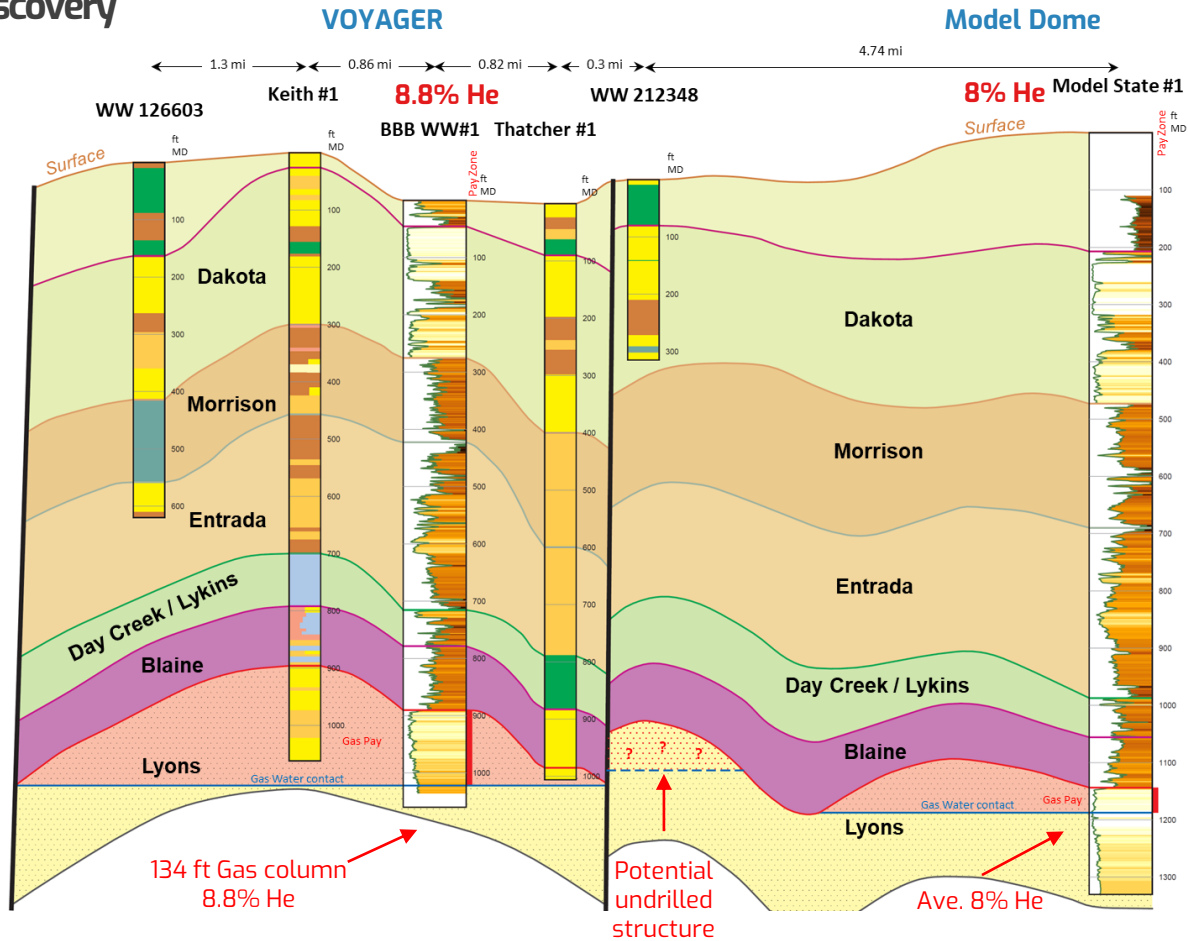


GALACTICA / PEGASUS CROSS SECTION

Showing recent discoveries



Showing recent discovery



DISCLAIMER AND IMPORTANT INFORMATION

The material in this presentation has been prepared by Blue Star Helium Limited (ACN 009 230 835) ("**Company**").

This presentation may not be reproduced, redistributed or passed on, directly or indirectly, to any other person, or published, in whole or in part, for any purpose without prior written approval of the Company. The material contained in this presentation is for information purposes only. This presentation is not an offer or invitation for subscription or purchase of, or a recommendation in relation to, securities in the Company and neither this presentation nor anything contained in it shall form the basis of any contract or commitment. Any offering of any of the Company's securities to Australian persons will be subject to Australian securities laws. The distribution of this document in jurisdictions outside of Australia may be restricted by law, and persons in to whose possession this document comes should inform themselves about, and observe, all such restrictions. This investor presentation is not an offer of securities for sale in the United States. Securities of the Company are not registered under the US Securities Act of 1933, as amended (the "US Securities Act") and may not be offered or sold in the United States absent registration or an exemption from registration under the US Securities Act. No public offer of the securities is being made in the United States and the information contained herein does not constitute an offer of securities for sale in the United States.

This presentation is not financial product or investment advice. It does not take into account the investment objectives, financial situation and particular needs of any investor. Before making an investment in the Company, an investor or prospective investor should consider whether such an investment is appropriate to their particular investment needs, objectives and financial circumstances, seek legal and taxation advice as appropriate and consult a financial adviser if necessary.

This presentation may contain forward-looking statements that are subject to risk factors associated with a waste management business. Forward looking statements include those containing such words as "anticipate", "estimates", "forecasts", "should", "could", "may", "intends", "will", "expects", "plans" or similar expressions. Such forward-looking statements are not guarantees of future performance and involve known and unknown risks, uncertainties, assumptions and other important factors, many of which are beyond the control of the Company. It is believed that the expectations reflected in these statements are reasonable but they may be affected by a range of variables and changes in underlying assumptions which could cause actual results or trends to differ materially. The Company does not make any representation or warranty as to the accuracy of such statements or assumptions.

This presentation has been prepared by the Company based on information currently available to it. No representation or warranty, express or implied, is made as to the fairness, accuracy, completeness or correctness of the information, opinions and conclusions contained in this presentation. To the maximum extent permitted by law, none of the Company or its subsidiaries or affiliates or the directors, employees, agents, representatives or advisers of any such party, nor any other person accepts any liability for any loss arising from the use of this presentation or its contents or otherwise arising in connection with it, including without limitation, any liability arising from fault or negligence on the part of the Company or its subsidiaries or affiliates or the directors, employees, agents, representatives or advisers of any such party.

This document presents a regional interpretation and includes data acquired by the Company and historic well and other data from other operators. By its nature this regional interpretation includes areas where the Company does not have a mineral lease.